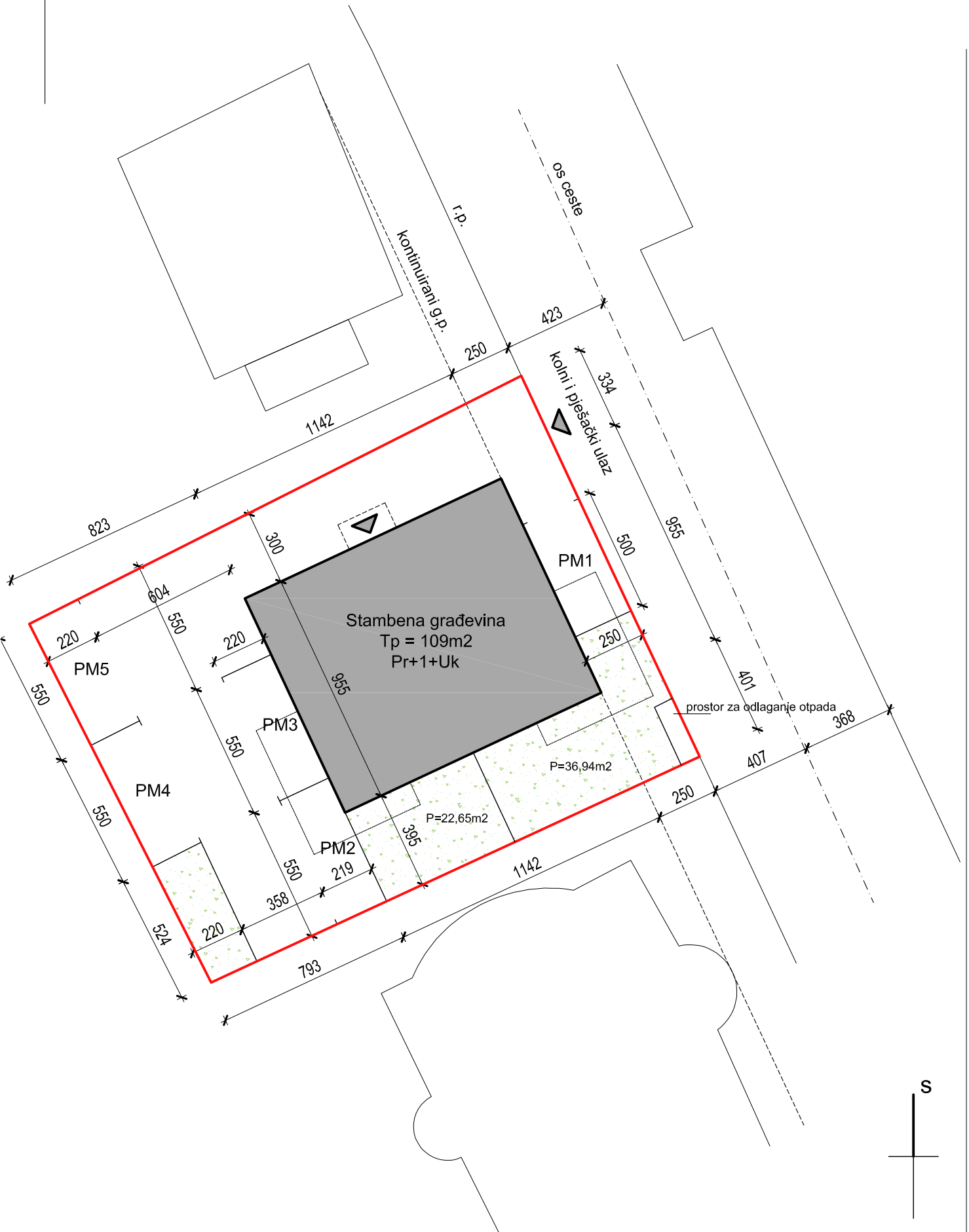
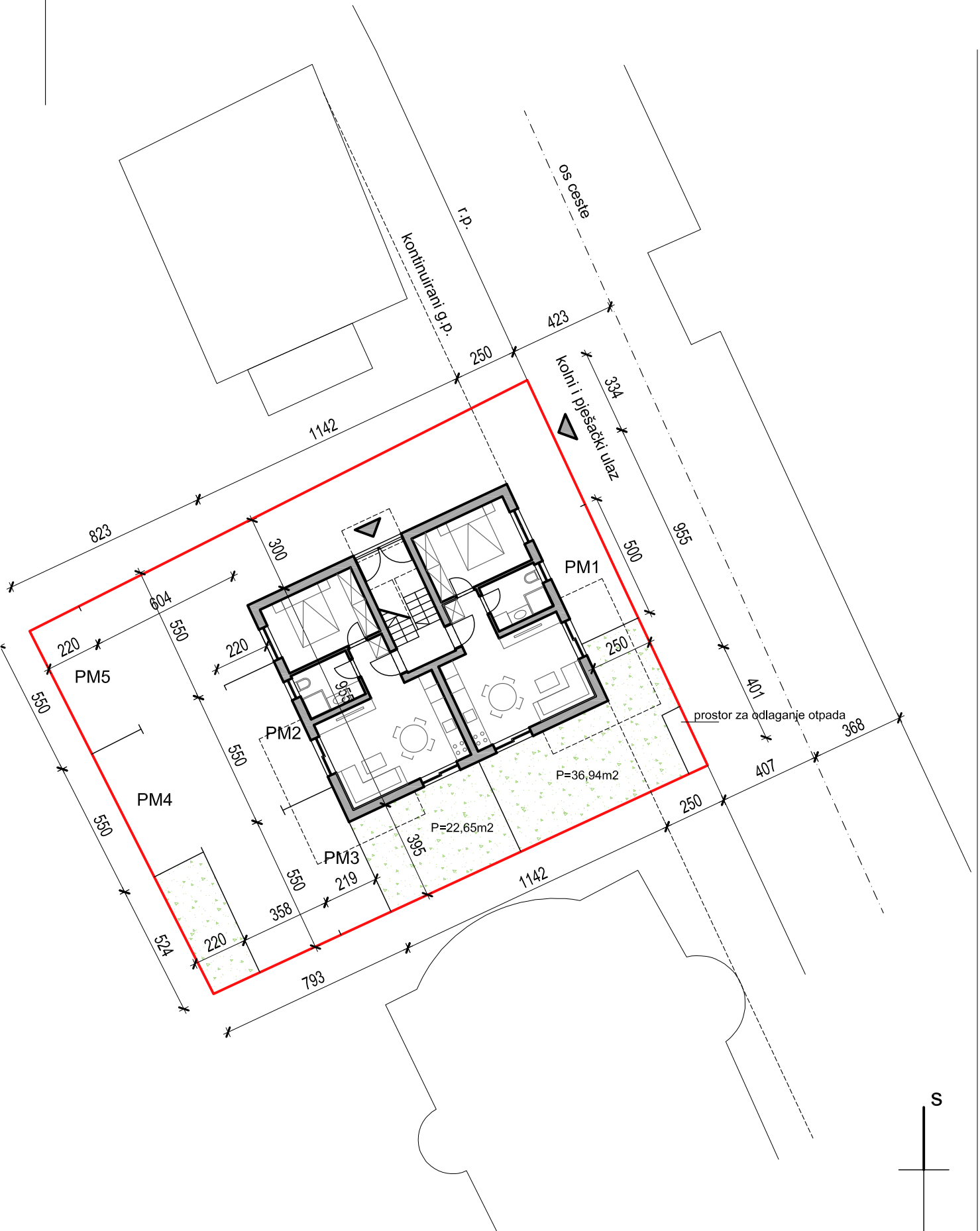


investitor	fons trgovina d.o.o.
adresa	klekovačka 23
k.č.br.	4992
k.o.	dubrava
autor	anton krluk, mag.ing.arch



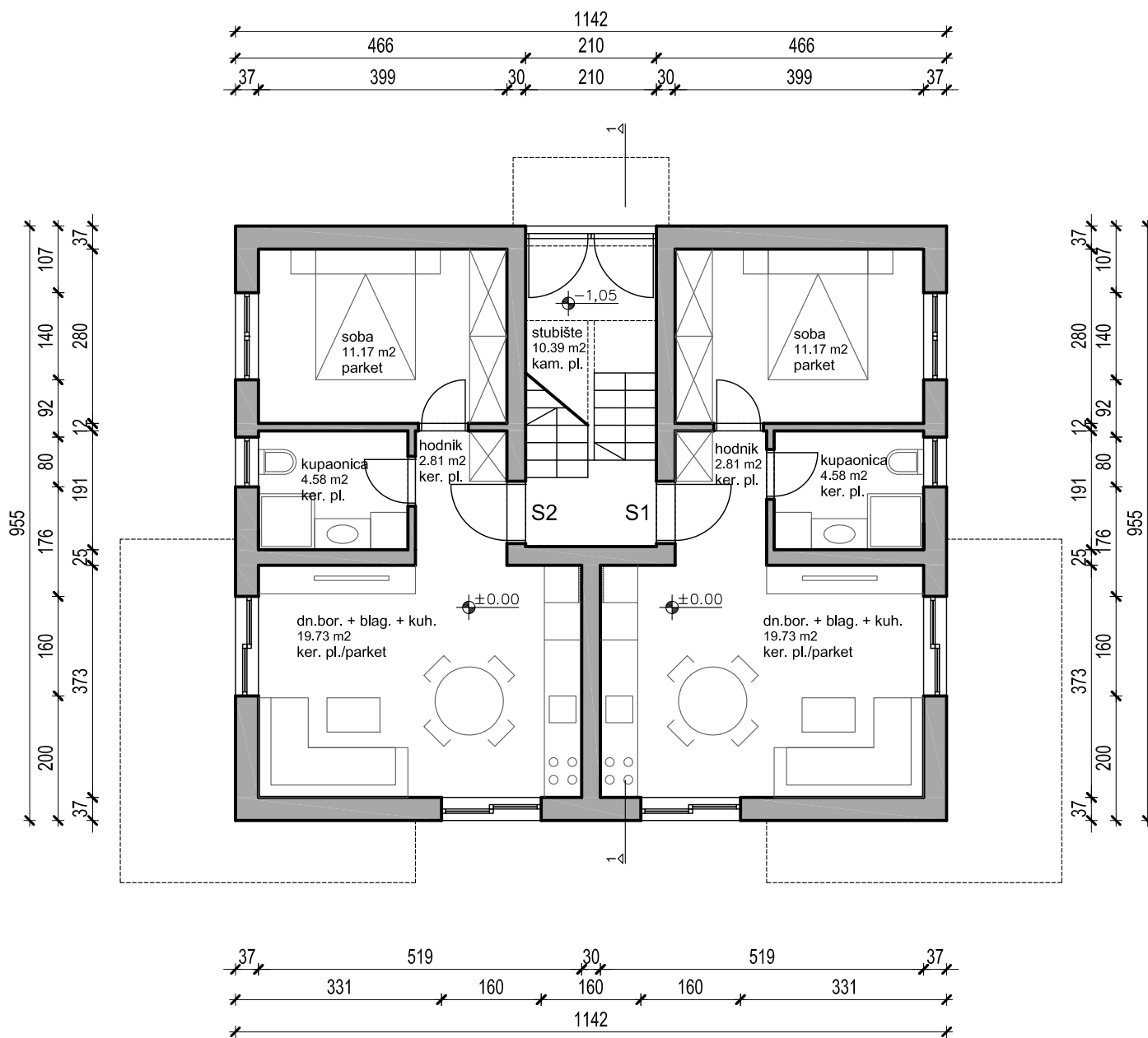


tlocrt prizemlja

mj 1/100

stan s1 - neto:  $38,29 \text{ m}^2 + (36,94 \text{ m}^2 \times 0,1) + \text{PM1} (12,5 \times 0,2) = 44,48 \text{ m}^2$

stan s2 - neto:  $38,29 \text{ m}^2 + (22,65 \text{ m}^2 \times 0,1) + \text{PM2} (12,1 \times 0,2) = 42,97 \text{ m}^2$

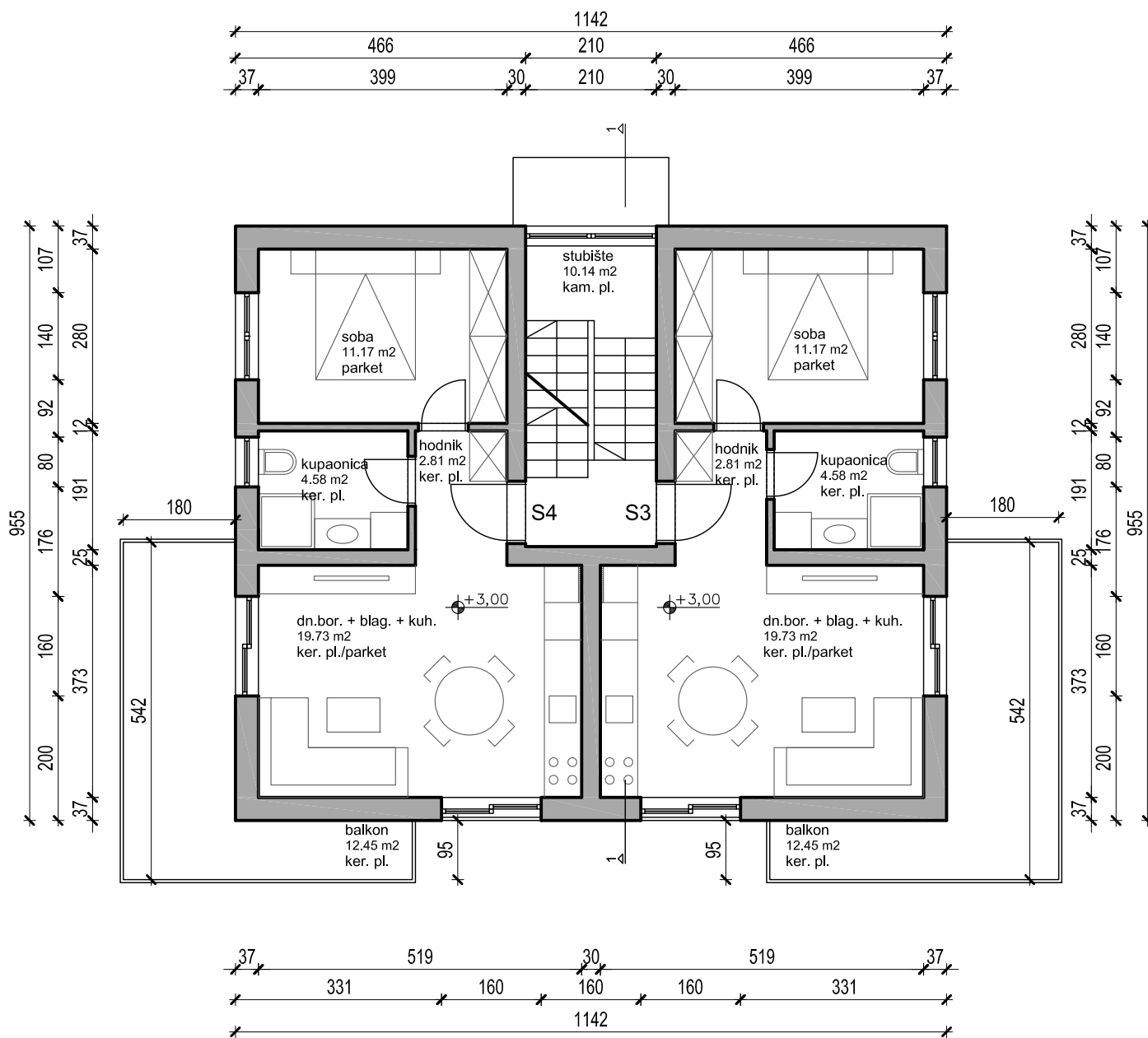


tlocrt kata

mj 1/100

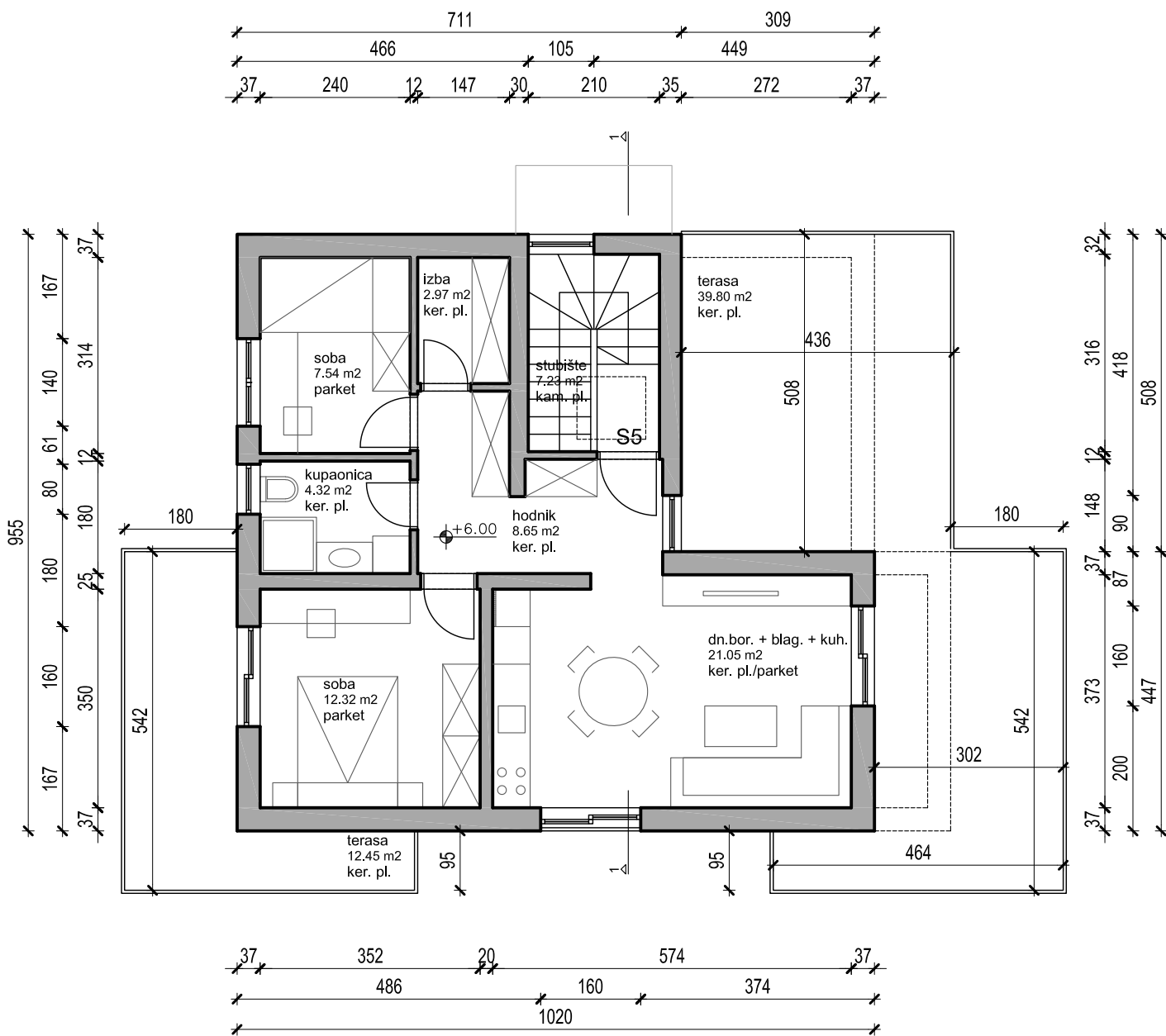
stan s3 - neto:  $38,29 \text{ m}^2 + (12,45 \text{ m}^2 \times 0,5) + \text{PM3} (12,1 \times 0,2) = 46,93 \text{ m}^2$

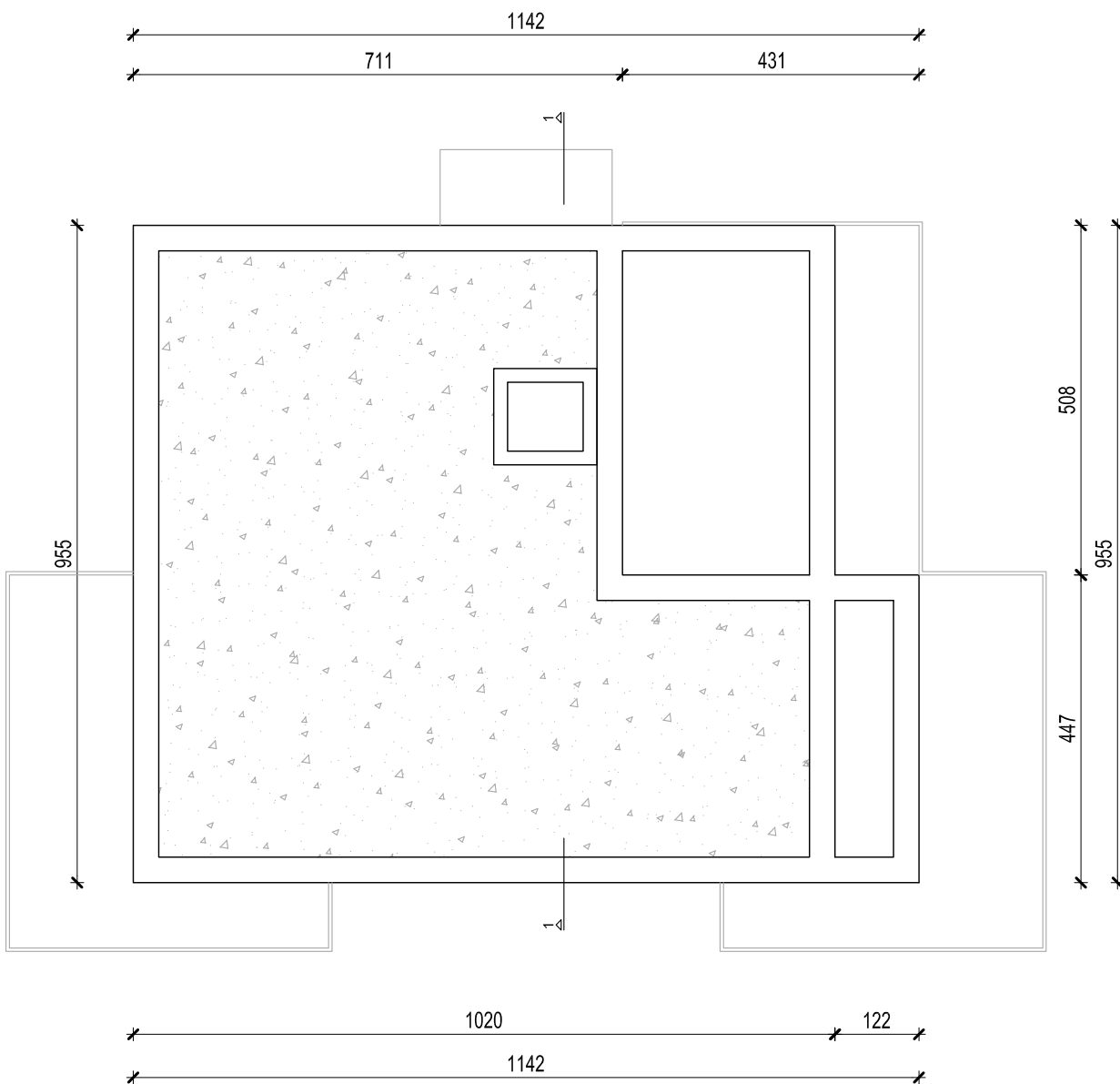
stan s4 - neto:  $38,29 \text{ m}^2 + (12,45 \text{ m}^2 \times 0,5) + \text{PM4} (12,1 \times 0,2) = 46,93 \text{ m}^2$

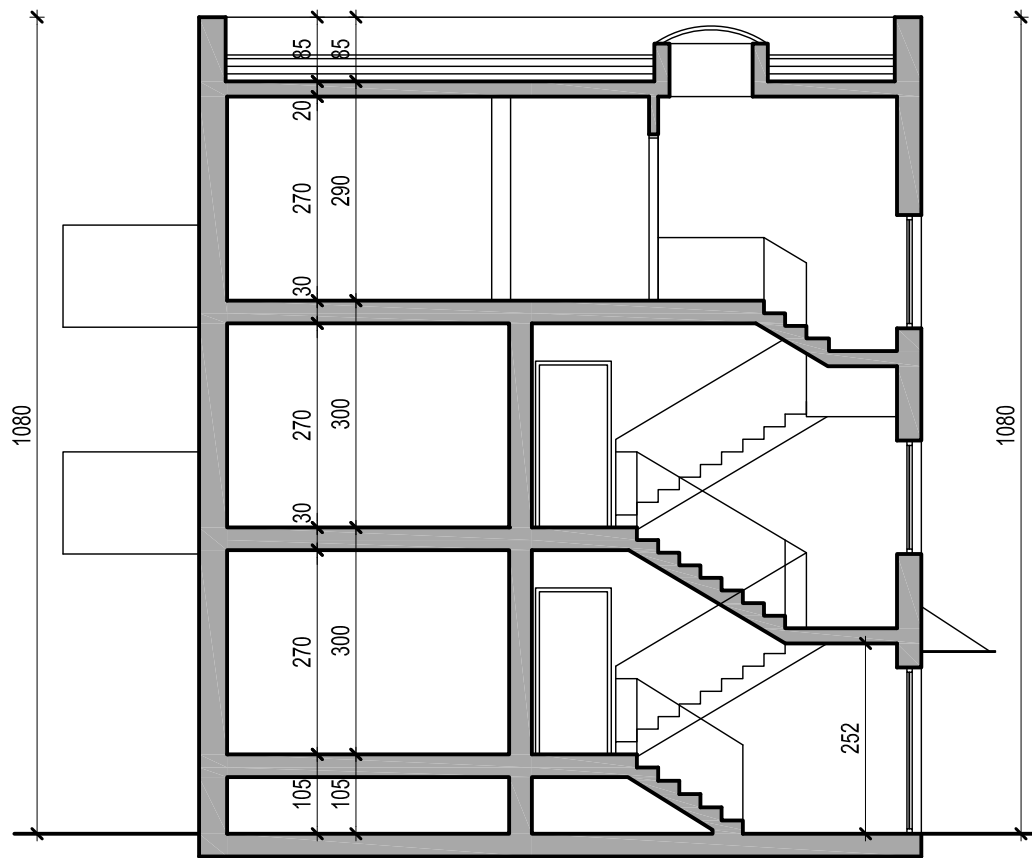


tlocrt uvučenog kata mj 1/100

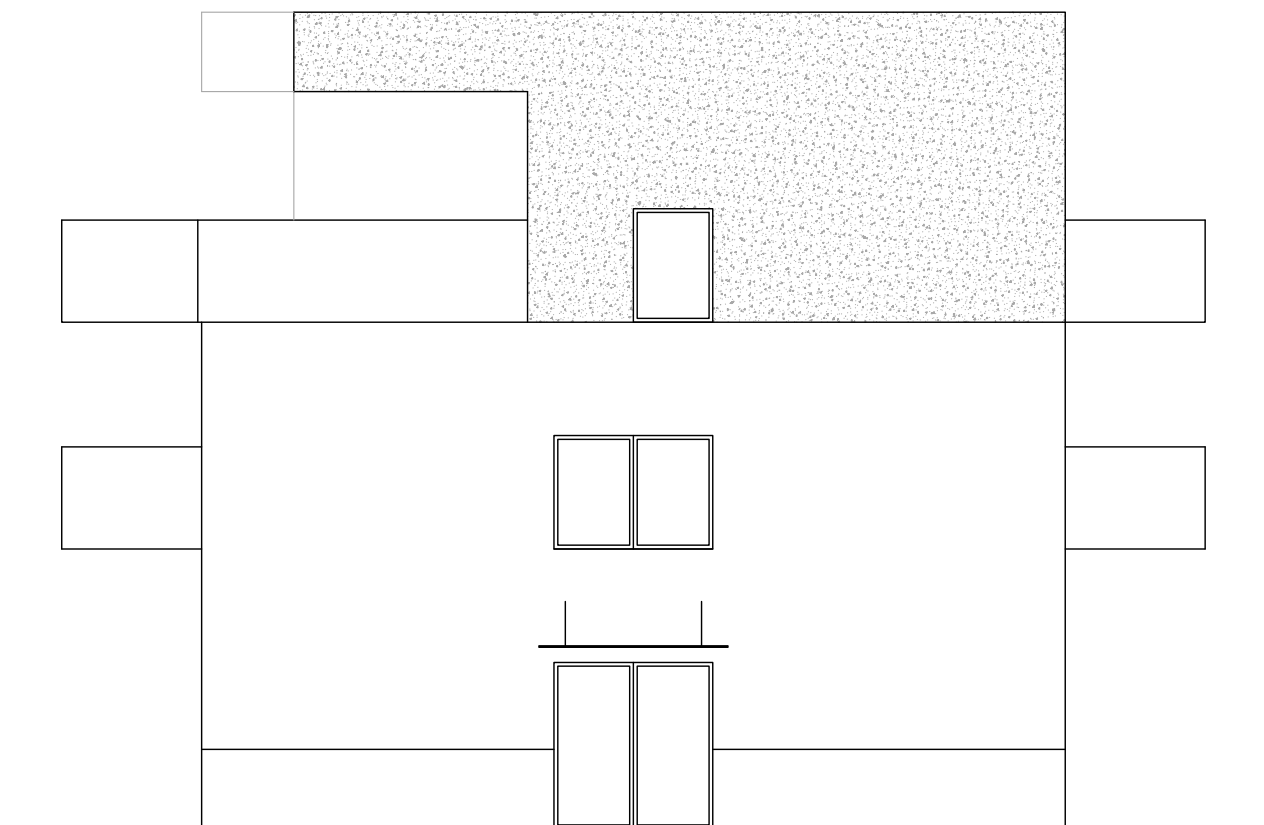
stan s5 - neto:  $56,85 \text{ m}^2 + (51,98 \text{ m}^2 \times 0,25) + \text{PM5} (12,1 \times 0,2) = 72,26 \text{ m}^2$

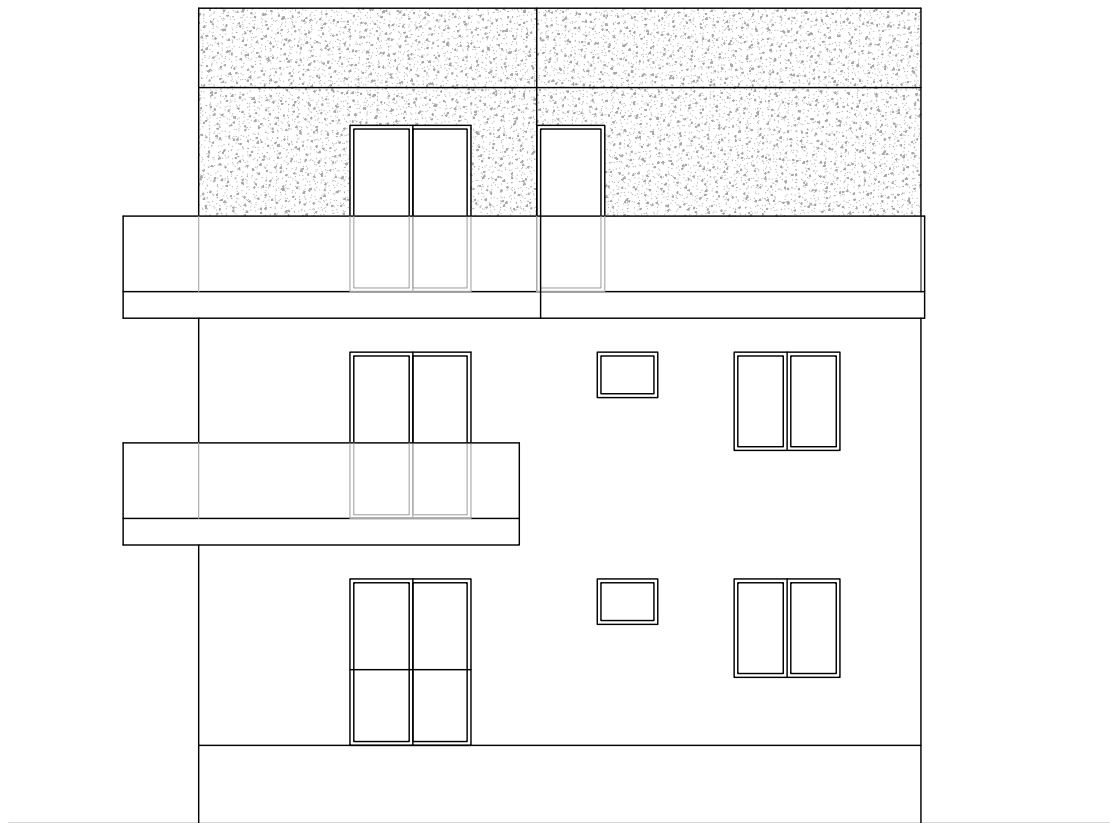


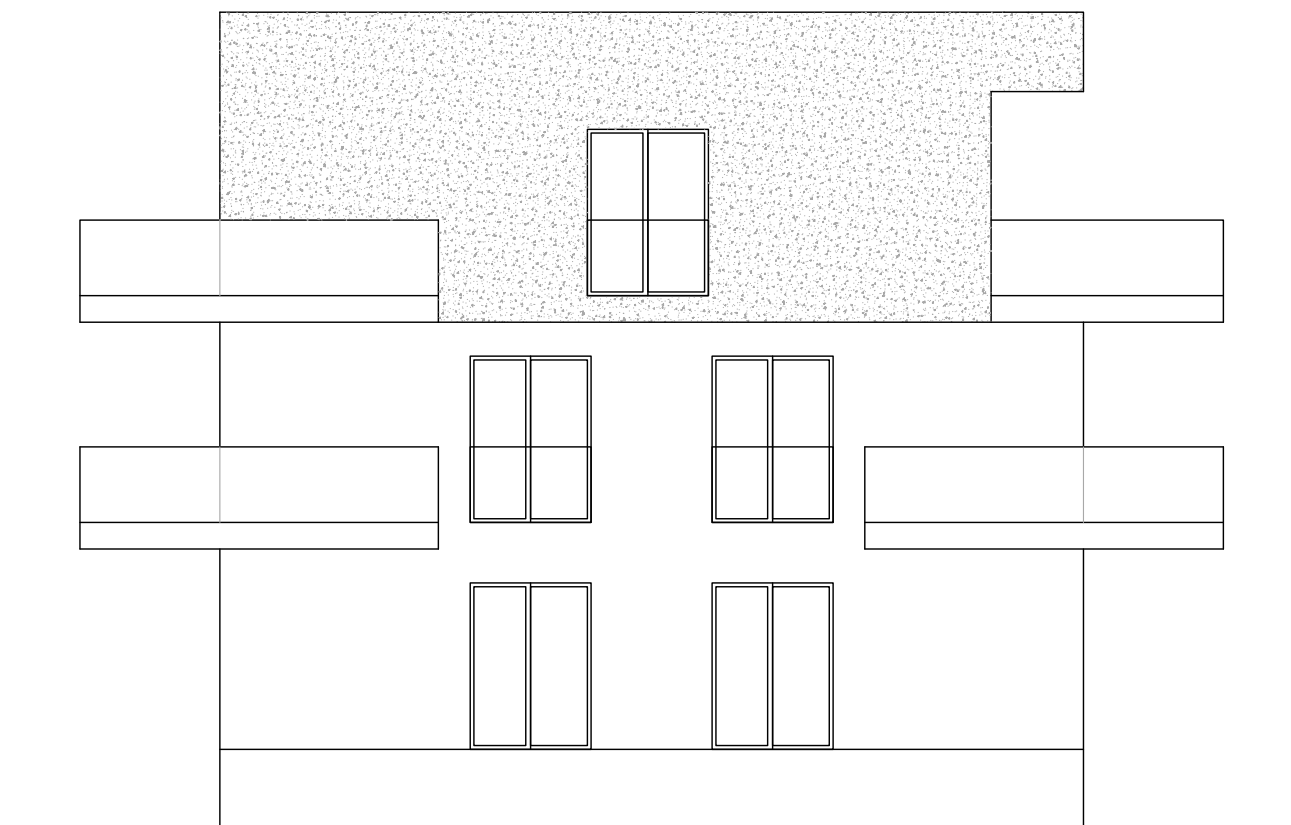


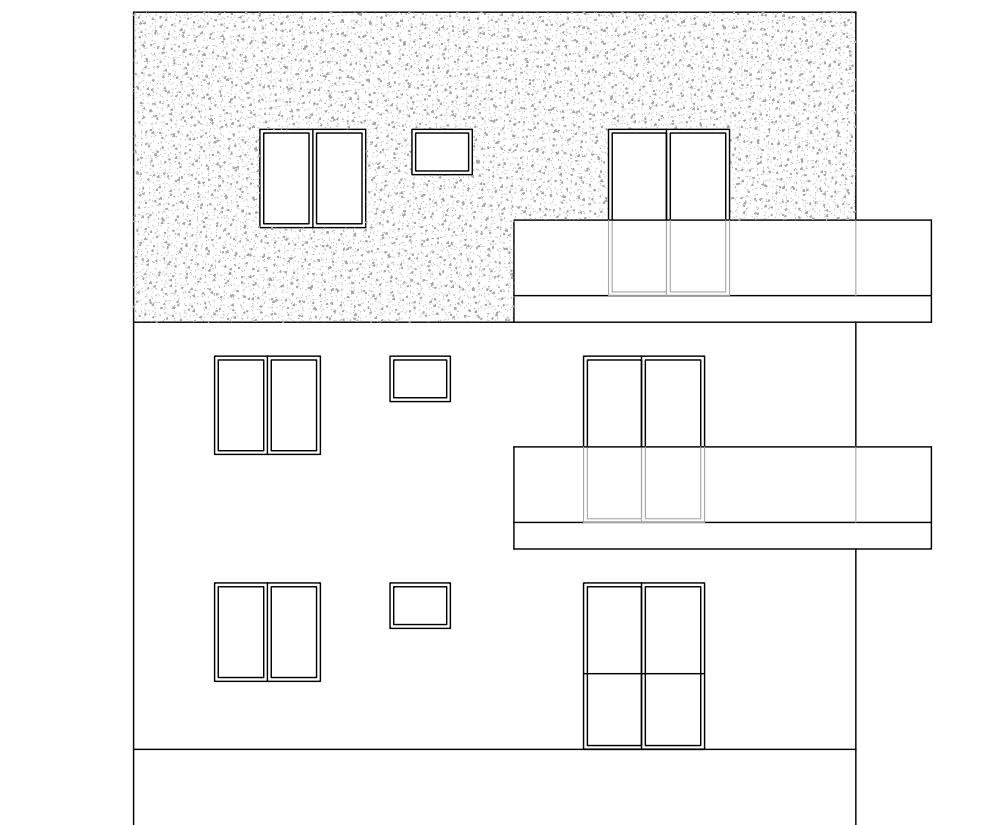












3d prikazi



stambena zgrada/fons trgovina/klekovačka 23/zagreb/v4

3d prikazi



stambena zgrada/fons trgovina/klekovačka 23/zagreb/v4

3d prikazi



stambena zgrada/fons trgovina/klekovačka 23/zagreb/v4

3d prikazi



stambena zgrada/fons trgovina/klekovačka 23/zagreb/v4